

1 HAWAII AVENUE NE PUD AND MAP AMENDMENT



PROJECT TEAM:

OWNER
WESLEY HOUSING DEVELOPMENT CORPORATION

LAND USE COUNSEL
COZEN O'CONNOR

ARCHITECT
BONSTRA | HARESIGN ARCHITECTS, LLP

LANDSCAPE ARCHITECT
JENNIFER HORN LANDSCAPE ARCHITECTURE

STRUCTURAL ENGINEER
RATHGERBER/GOSS ASSOCIATES, P.C.

MEP ENGINEER
CAPITOL ENGINEERING GROUP

CIVIL ENGINEER
VIKA CAPITOL, LLC.

TRAFFIC CONSULTANT
GROVE SLADE ASSOCIATES, INC.

WESLEY HOUSING DEVELOPMENT CORPORATION
555 CEDROSE AVE #300
ALEXANDRIA, VA 22304

RATHGERBER/GOSS ASSOCIATES, P.C.
15071 CRABBS BRANCH WAY
ROCKVILLE, MD 20855
301-595-0073

CAPITOL ENGINEERING GROUP
1825 K STREET NW
SUITE 215
WASHINGTON, DC 20006
202-216-0039

MEP ENGINEER

JENNIFER HORN LANDSCAPE ARCHITECTURE

STRUCTURAL ENGINEER

MEP ENGINEER

CIVIL ENGINEER

TRAFFIC CONSULTANT

1 HAWAII AVENUE
11 HAWAII AVENUE NE
WASHINGTON, DC 20001

REVISIONS

NO.	DESCRIPTION	DATE
1	PRE-HEARING SUBMISSION	8/27/19

DATE	8/27/19
PROJECT NO.	2019-044
DRAWN BY	BH/MISS
CHECKED BY	DH/EM

WESLEY HOUSING DEVELOPMENT CORPORATION

© 2019 - Bonstra | Haresign ARCHITECTS



COVER SHEET

1728 Fourteenth Street, NW, Suite 300
Washington, DC 20005-4309
www.bonstra.com | 202 | 588 9373 T

A0.0

ZONING COMMISSION
District of Columbia
CASE NO.19-01
EXHIBIT NO.34A1

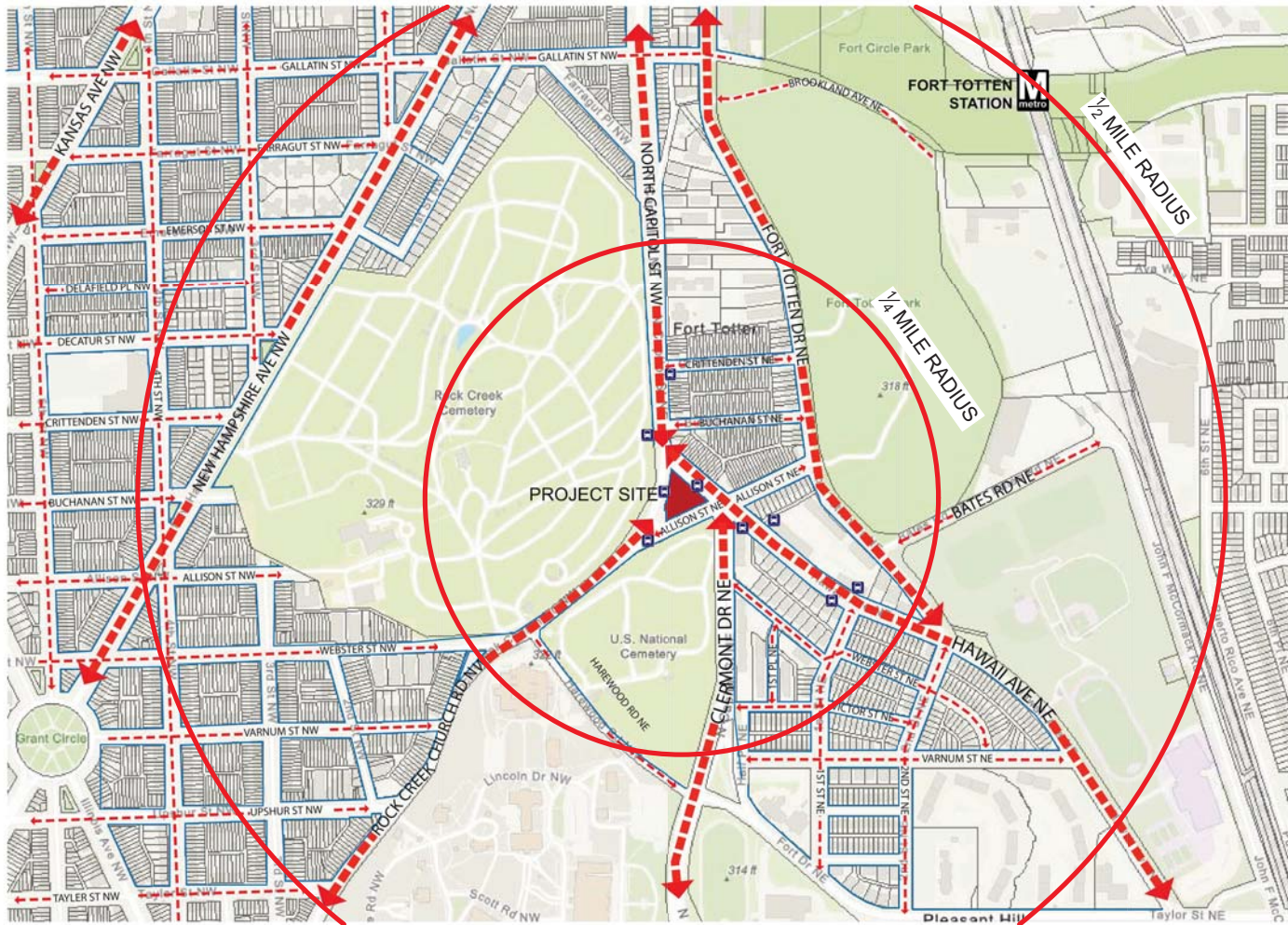
1 HAWAII AVE NE
 WASHINGTON, DC 20011

REVISIONS

1	PRE-FEASIBILITY SUBMISSION	8/27/19

DATE	8/27/19
PROJECT NO.	2019-044
DRAWN BY	DM/MS
CHECKED BY	DM/MS

CIRCULATION PLAN



- SIDEWALKS
- SHARED BIKE PATH
- DEDICATED BIKE PATH
- ➔ ONE-WAY PRIMARY STREET
- ⬄ TWO-WAY SECONDARY STREET
- ➔ ONE-WAY SECONDARY STREET
- ⬄ TWO-WAY PRIMARY STREET

WESLEY HOUSING DEVELOPMENT CORPORATION

CIRCULATION PLAN

Bonstra | Haresign
ARCHITECTS

© 2019 - Bonstra | Haresign ARCHITECTS

1728 Fourteenth Street, NW, Suite 300
 Washington, DC 20005-4309

www.bonstra.com | 202.588.9373

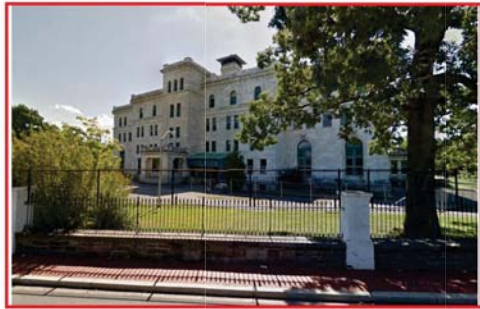
A0.07



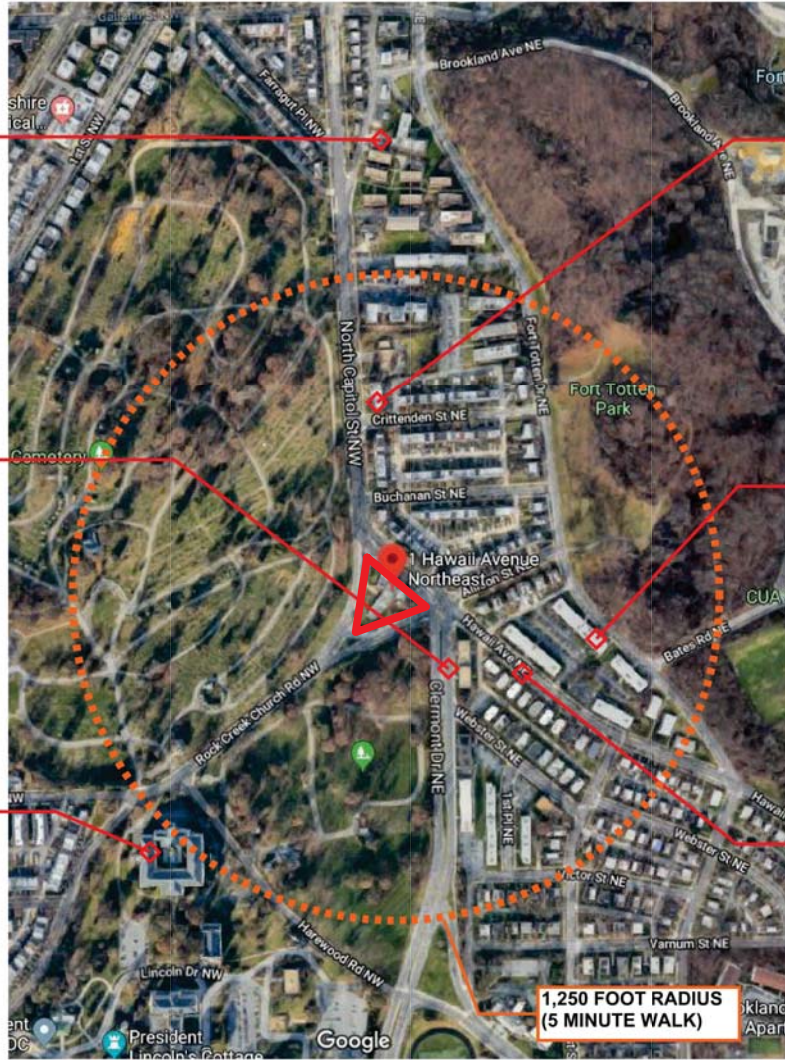
NORTHWOOD GARDENS



GARDEN APARTMENTS ON CLERMONT DRIVE



SOLDIER'S HOME



1,250 FOOT RADIUS
(5 MINUTE WALK)



FORT TOTTEN APARTMENTS



HAWAIIAN GARDENS APARTMENTS



HAWAIIAN GARDENS APARTMENTS

CLIENT
WESLEY HOUSING DEVELOPMENT CORPORATION
 855 CROSBY AVE #400
 ALEXANDRIA, VA 22304

STRUCTURAL ENGINEER
 RATHERBERGER GOSS ASSOCIATES, P.C.
 15071 CRABBS BRANCH WAY
 ROCKVILLE, MD 20855
 301-586-0073

MEP ENGINEER
 CAPITOL ENGINEERING GROUP
 1825 K STREET NW
 SUITE 215
 WASHINGTON, DC 20006
 202-216-0039

1 HAWAII AVENUE
 1 HAWAII AVENUE NE
 WASHINGTON, DC 20001

REVISIONS

NO.	DESCRIPTION	DATE
1	PRE-HEARING SUBMISSION	8/27/19

DATE: 8/27/19
 PROJECT NO: 2019-244
 DRAWN BY: BHM/MS
 CHECKED BY: DHEM



WESLEY HOUSING DEVELOPMENT CORPORATION

EXISTING AERIAL VIEW - LOOKING NORTH

© 2019 - Bonstra | Harsign ARCHITECTS

Bonstra | Harsign
ARCHITECTS

CONTEXT PHOTO

1728 Fourteenth Street, NW, Suite 300
Washington, DC 20005-4309

www.bonstra.com | 202 | 588 9373 T

CLIENT
WESLEY HOUSING DEVELOPMENT CORPORATION
855 CROROSE AVE. #60
ALEXANDRIA, VA 22312

STRUCTURAL ENGINEER
RATHGERBERGROSS ASSOCIATES, P.C.
15071 CRABBS BRANCH WAY
ROCKVILLE, MD 20855
301-599-0073

M/E/P ENGINEER
CAPITOL ENGINEERING GROUP
1825 K STREET NW
SUITE 315
WASHINGTON, DC 20005
202-216-0039

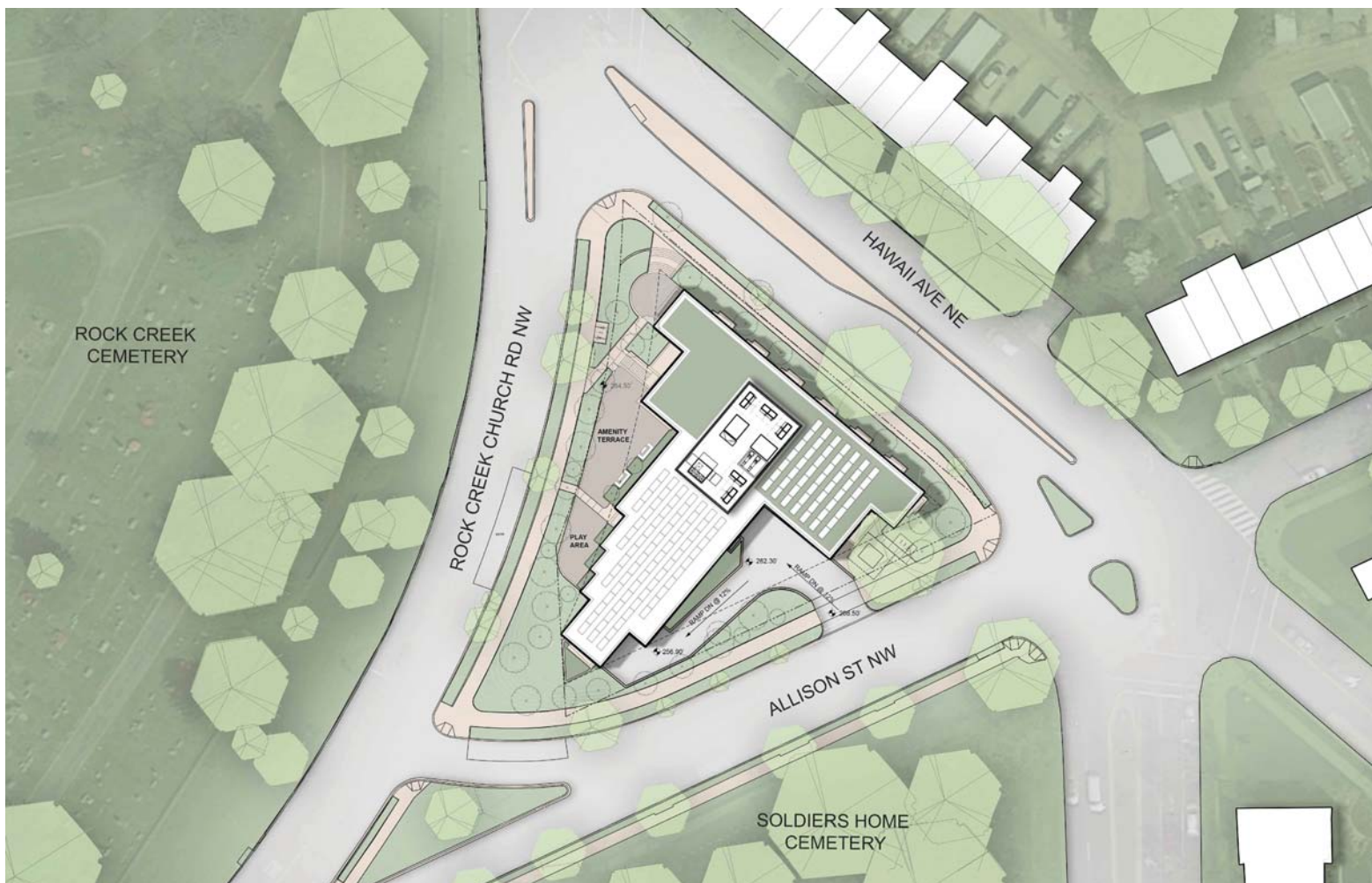
1 HAWAII AVE NE
1 HAWAII AVE NE
WASHINGTON, DC 20001

REVISIONS

1 PRE-HEARING SUBMISSION	8/27/19

DATE:	8/27/19
PROJECT NO.:	2019-024
DRAWN BY:	BH/AMSS
CHECKED BY:	DH/EM

A0.06



CLIENT
 WESLEY HOUSING DEVELOPMENT CORPORATION
 835 CROMWELL AVE #40
 ALEXANDRIA, VA 22302

STRUCTURAL ENGINEER
 RATHGERBERG+GOSS ASSOCIATES, P.C.
 15071 CRABBS BRANCH WAY
 ROCKVILLE, MD 20855
 301-599-0073

MEP ENGINEER
 CAPITOL ENGINEERING GROUP
 1825 K STREET NW
 SUITE 515
 WASHINGTON, DC 20006
 202-216-0038

1 HAWAII AVENUE
 1780 HAWAII AVENUE NE
 WASHINGTON, DC 20011

REVISIONS

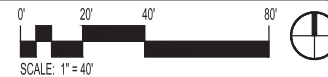
NO.	DESCRIPTION	DATE
1	PRE-HEARING SUBMISSION	8/27/19

DATE	8/27/19
PROJECT NO.	2019-254
DRAWN BY	BH/AMSS
CHECKED BY	DH/EM

Notes
 The number, size, and location of units, stairs, and elevators are preliminary and shown for illustrative purposes only. Final layouts may vary.
 The Applicant intends to provide solar panels, as generally depicted; however, the inclusion of solar panels is subject to availability and proper funding mechanisms.

WESLEY HOUSING DEVELOPMENT CORPORATION

ARCHITECTURAL SITE PLAN



1728 Fourteenth Street, NW, Suite 300
 Washington, DC 20005-4309
 www.bonstra.com | 202.588.9373 T

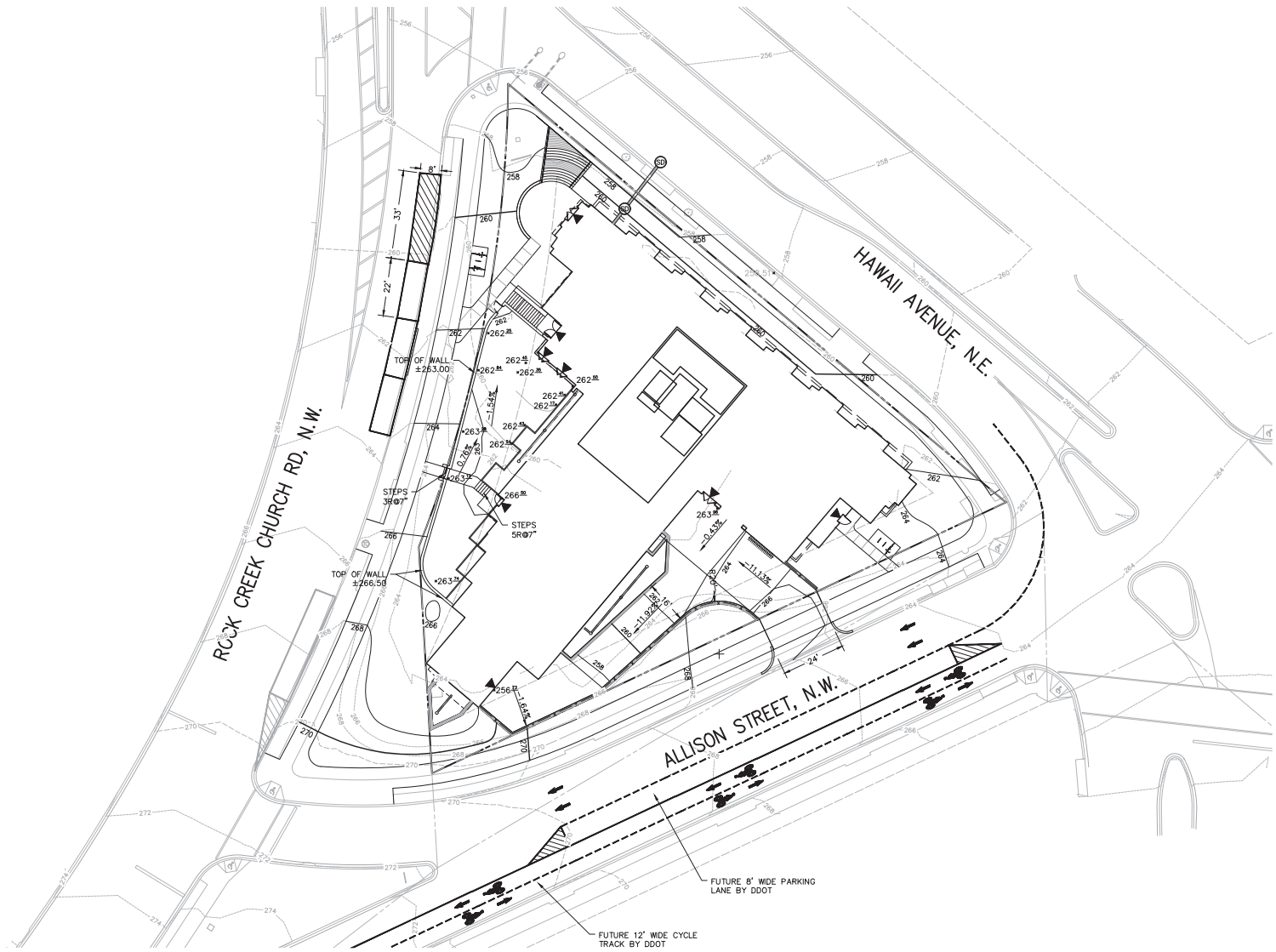
ARCHITECTURAL SITE PLAN

A1.00

1 HAWAII AVE NE
 1118 HAWAII AVE NE
 WASHINGTON, DC 20001

REVISIONS	
1	PRE-CHANG SUBMISSION 8/27/19

DATE:	8/27/19
PROJECT NO.:	1906684
DRAWN BY:	8-B
CHECKED BY:	KJG



WESLEY HOUSING DEVELOPMENT CORPORATION GRADING PLAN

© 2018 - Bonstra | Harsign ARCHITECTS S:\V001-1000\OAR1A - 1 Hawaii Ave NE - PUD\pud\preliminary\VD0481A_000.dwg - Sep 12, 2019 AT 10:02:41 AM



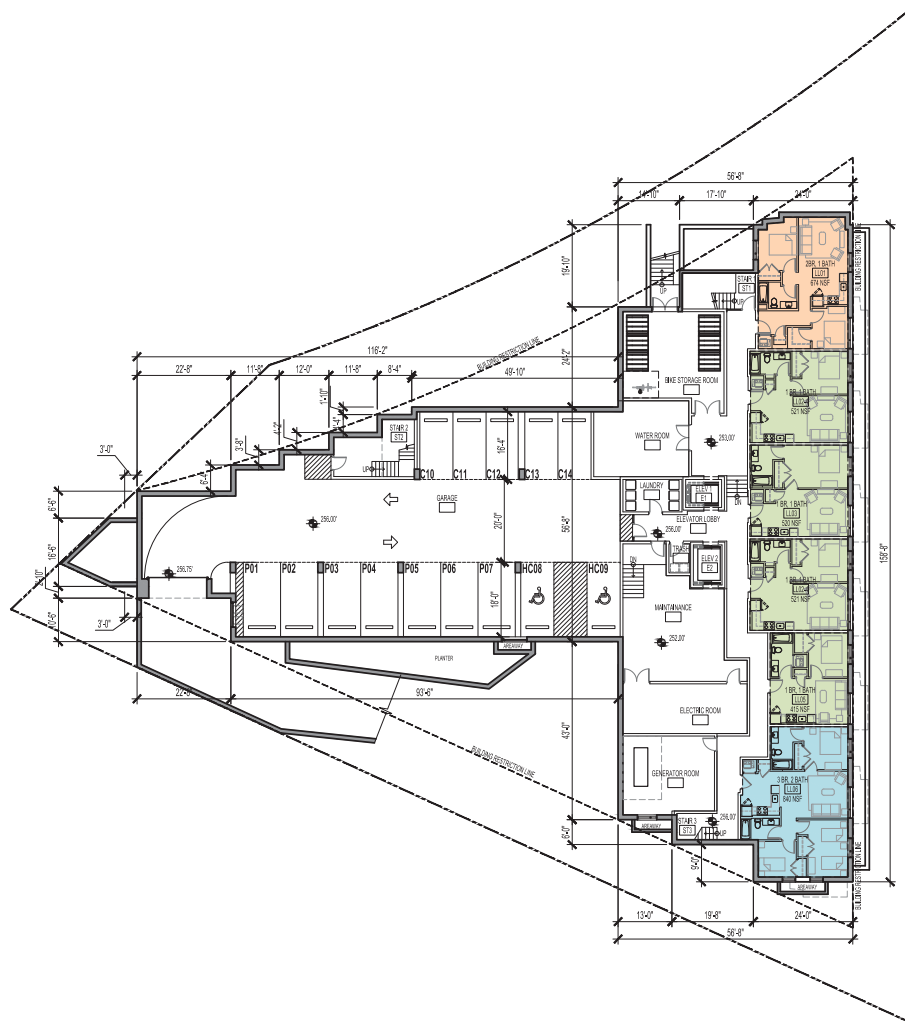
Bonstra Harsign ARCHITECTS

1728 Fourteenth Street, NW, Suite 300
 Washington, DC 20009-4309
 www.bonstra.com 202 588 9373 T

LAYOUT: C.03 GRADING, Plotted By: rml

GRADING PLAN

C.03



Notes:
The number, size, and location of units, stairs, and elevators are preliminary and shown for illustrative purposes only. Final layouts may vary.

WESLEY HOUSING DEVELOPMENT CORPORATION

CELLAR FLOOR PLAN

© 2019 - Bonstra | HareSIGN ARCHITECTS

WESLEY HOUSING DEVELOPMENT CORPORATION
 5515 CRENSHAW AVE #400
 ALEXANDRIA, VA 22312

RATHGERBERGROSS ASSOCIATES, P.C.
 15071 CRABBS BRANCH WAY
 ROCKVILLE, MD 20855
 301-595-0073

CAPITOL ENGINEERING GROUP
 1825 K STREET NW
 SUITE 215
 WASHINGTON, DC 20006
 202-216-0039

STRUCTURAL ENGINEER
 CLIENT

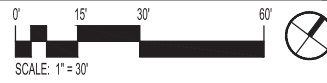
MEP ENGINEER

1 HAWAII AVENUE
 THIRDMILE AVE NE
 WASHINGTON, DC 20011

REVISIONS

1 PRE-HEARING SUBMISSION	8/27/19

DATE: 8/27/19
 PROJECT NO: 2019-244
 DRAWN BY: BMM/MS
 CHECKED BY: DHEM



1728 Fourteenth Street, NW, Suite 300
 Washington, DC 20005-4309

www.bonstra.com | 202.588.9373 T

CELLAR FLOOR PLAN

A1.01



Notes:
 The number, size, and location of units, stairs, and elevators are preliminary and shown for illustrative purposes only. Final layouts may vary.

WESLEY HOUSING DEVELOPMENT CORPORATION

GROUND FLOOR PLAN

© 2019 - Bonstra | Haresign ARCHITECTS

WESLEY HOUSING DEVELOPMENT CORPORATION
 6515 OROCKEE AVE #400
 ALEXANDRIA, VA 22304

RATHGERBERGROSS ASSOCIATES, P.C.
 15071 CRABBS BRANCH WAY
 ROCKVILLE, MD 20855
 301-596-0073

CAPITOL ENGINEERING GROUP
 1825 K STREET NW
 SUITE 315
 WASHINGTON, DC 20006
 202-216-0039

STRUCTURAL ENGINEER
 MECHANICAL ENGINEER

1 HAWAII AVENUE
 1 HAWAII AVENUE NE
 WASHINGTON, DC 20011

REVISIONS	DATE
1 PRE-HEARING SUBMISSION	8/27/19

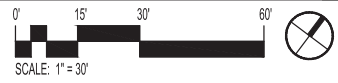
DATE	8/27/19
PROJECT NO.	2019-004
DRAWN BY	BHM/BMS
CHECKED BY	DHEM

Bonstra | Haresign ARCHITECTS

1728 Fourteenth Street, NW, Suite 300
 Washington, DC 20005-4309

www.bonstra.com 202.588.9373 T

GROUND FLOOR PLAN



A1.02